

Ruregold Aramid 45/45 FRCM System NHL

Mighty Small 50 Evo 120V 60Hz or Mighty Small 50 Plus 220V 60Hz

Multipurpose eccentric screw pump

Configuration for the specific application of MX-NHL masonry mortar;

1106344 Mighty Small 50 EVO 120V / 60 Hz Sph 1.5 kW (2HP)

- IM250 diaphragm compressor
Air flow 66 gal/min, power 0.75kW (1HP) 120V 60Hz
- Maximum recommended pumping distance 49 ft
- Maximum recommended height 33ft
- Material output 0.2 - 4 gal/min
- Pressure 218 psi
- Maximum particle size 5/32 inc

1106345 Mighty Small 50 PLUS 240V 60Hz Sph - 2.2 kW (3HP)

- IM250 diaphragm compressor.
Air flow 66 gal/min, power 0.75kW (1HP) 120V 60Hz
- Maximum recommended pumping distance 66 ft
- Maximum recommended height 50 ft
- Material output and pressure;
Green stator 1.3 – 6,9 gal/min, 218 psi
Purple stator 0.7 – 4,5 gal/min 363psi
- Maximum particle size;
Green stator 5/32 inc
Purple stator 1/8 inc



Accessories to optimize the Small 50 for the application;

1107010 Kit for spraying smoothing materials

Includes:

- DN 1 inch spray gun
- 1 set spray deflectors DN 5-6-8-12mm
- 50 ft mortar hose
- 53 ft air hose
- Hose cleaning kit

1107546 Dual-diaphragm compressor IM250 120V

1107031 D8 - 1.5 Rotor green color (included in the machine)

1107030 D8 - 1.5 Stator green color (included in the machine)



Preparing the MX-NHL INORGANIC MATRIX Masonry

The product is supplied in 55lb paper bags.



With IMER 1194302 Mortatman 120 Mix planetary mixer

1. Pour the contents of the MX-NHL Masonry bag and add approx. 1.3 – 1.6 gal (5.0-6.0 l) of clean water, as specified on the bag.
2. Mix for about 4-5 minutes so as to obtain a smooth, homogeneous mix.
3. Directly discharging the product into the hopper of the Mighty Small 50

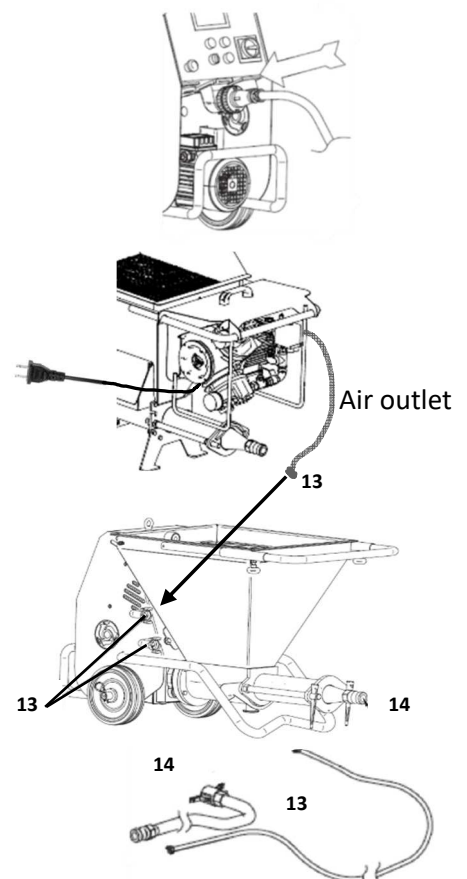


With IMER 1106340 SPIN 15A or 1106152 Spin 30 Plus, continuous mixer

1. Adjust the mixing water flow rate to 260 l/h on the Spin 15 and 400 l/h on the Spin 30
2. Pour the contents of the MX-NHL Masonry bag in the hopper of the Spin
3. Start the mixer and finely adjust the water until you obtain a mixture with the correct consistency
4. Position the Mighty Small 50 hopper under the discharge opening of the mixer.

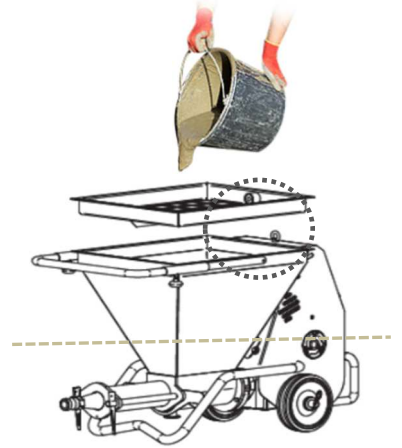
Instructions for quick start-up of the Small 50

- 1 **Connect the machine to the power supply;**
 - Mighty Small 50 Plus 240V Sph
 - Mighty Small 50 Evo 120V Sph
- 2 **Connect the compressor to a secondary 120V 60Hz power supply**
- 3 **Connect the material hoses to the Small 50**
- 4 **Connect the air hose to the Small 50**

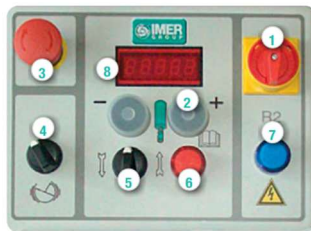


- 5 Prepare approximately 2 gallons of cement slurry.**
This involves mixing 50% water and 50% pure cement

- 6 Put the grout into the hopper of the Small 50**
The hopper grate must always be in place.
There is a safety sensor that prevents the machine from starting when the protective grate is missing.

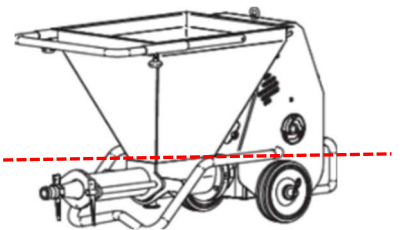


- 7 Turn on the electrical panel and set the speed to 50**
Using the + and – buttons(2), then read the indication on the display (8)



- ① On/Off switch
- ② Rotor/stator speed control
- ③ Emergency stop button
- ④ Vibrating grate switch
- ⑤ Rotor/stator forward/reverse
- ⑥ Safety default light
- ⑦ Current supply light
- ⑧ LED code display

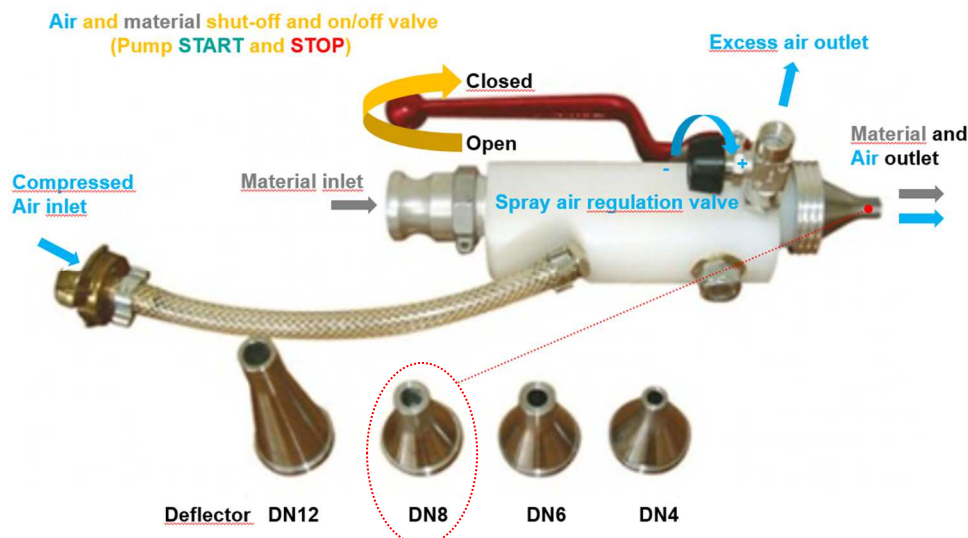
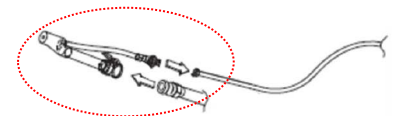
- 8 Turn on the pump and wait for the slurry level to drop**
(Selector 5, turn to the right)
Turn off the pump (Selector 5, turn to the centre) as soon as the level reaches the agitator shaft, without allowing the pump to draw in air



- 9 Put the MX-NHL INORGANIC MATRIX Masonry, previously mixed with water, into the hopper**
10 Turn on the pump and wait for the product to come out of the hose without stopping the pump

- 11 Turn off the pump**
(selector 5, turn to the centre)

- 12 Connect the spray lance equipped with DN8 deflector**
- Close the spray air control valve completely (turn in the - direction)
 - Leave the Air and Material valve open.

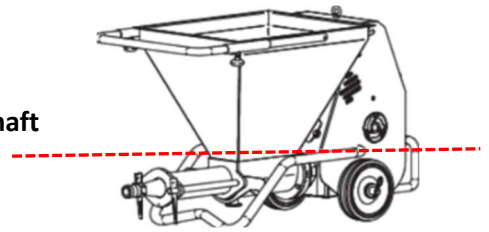


- 13 Reduce the pump's material flow rate to 35 (8)**
by pressing the - button (2) on the control panel
- 14 Turn on the pump and the compressor**
(Selector 5, turn to the right)
- 15 Approach the wall and open the valve on the spray gun.**
Apply the material using a rotating motion with the spray gun, so as to distribute the material evenly on the wall while maintaining the desired thickness (approximately 1/8" – 3/16")
- 16 When desired, the pump can be stopped by closing the valve on the spray gun.**
To resume spraying, open the valve on the spray gun

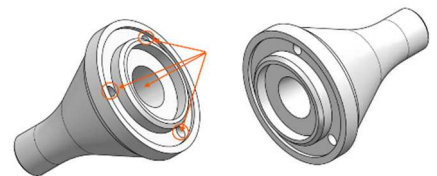


Washing the Small 50

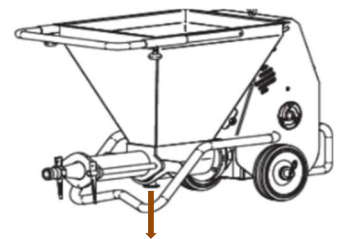
- 1 Empty the material in the hopper down to the level of the agitator shaft**
- 2 Pour plenty of water into the hopper, leave the pump on and wait until the liquid material reaches the spray gun, without stopping the pump and then stop the pump**
- 3 Let plenty of water flow through the hose and then stop the pump.**



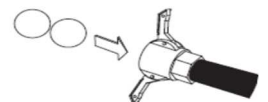
- 4 Remove the spray gun and wash it carefully**
making sure to clean the orifice inside of the nozzle



- 5 Remove the drain plug under the hopper**
- 6 Wash the hopper of the Small 50 and drain the dirty water**



- 7 Remove the hoses from the pump and insert two sponge balls.**
- 8 Fill the hopper with water and start the pump without stopping it until the sponge balls come out.**
- 9 Drain the water from the hopper, to prevent freezing or oxidation.**



IMER International S.p.A Equipment Division
Franco Borsatto
 Mortar Line Senior Specialist